



## PIPE COUPLINGS

HAMMER UNION - FIGURE 200

**2,000 PSI CWP - 3,000 PSI TEST**

### FEATURES & APPLICATIONS:

- Fig. 200 is a union of great utility. It meets most requirements in the medium pressure ranges. Precision seating surfaces assure dependable pressure seal. Recommended for water, oil and gas applications where working pressures do not exceed 2,000 PSI NSCWP.

### TECHNICAL DATA:

- Sizes: 1" - 6"
- Pressure Rating: 2,000 PSI NSCWP
- End Connections: Threaded
- Color Code: Gray Subs / Blue Nut

2000 PSI CWP	
SIZE	FIGURE 200
1"	HU200-100T
1-1/4"	HU200-125T
1-1/2"	HU200-150T
2"	HU200-200T
2-1/2"	HU200-250T
3"	HU200-300T
4"	HU200-400T
6"	HU200-600T



Information contained on this page is for general information purposes only. Seal Fast Inc. assumes no responsibility for errors or omissions for this product.

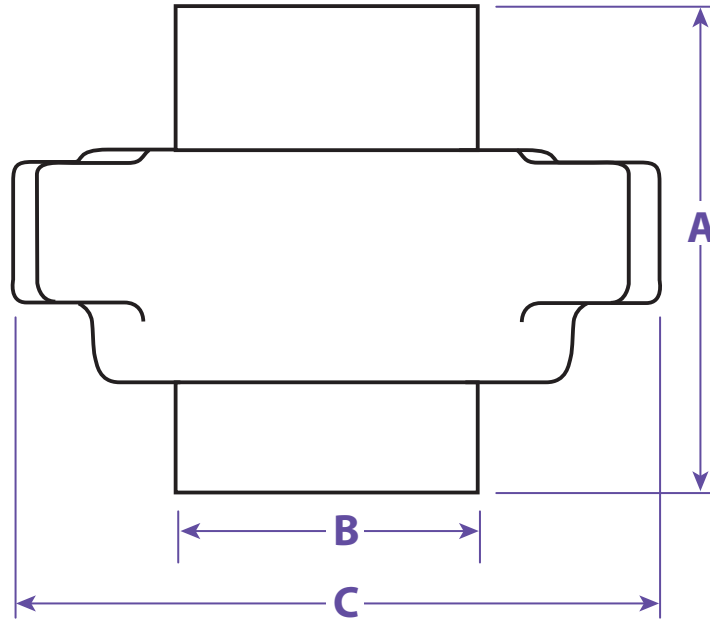


## PIPE COUPLINGS

HAMMER UNION - FIGURE 200

**2,000 PSI CWP - 3,000 PSI TEST**

Fig. 200 is a general purpose union.



### Size / Weight

IN	MM	Lbs	A	B	C	ACME TPI	MATERIAL NUTS	SUBS	Part #
1"	25	1.75	2.670	1.640	4.065	6 STD	DI	SF	HU200-100T
1-1/4"	32	2.25	2.730	1.935	4.635	6 STD	DI	SF	HU200-125T
1-1/2"	40	2.75	2.770	2.250	4.750	6 STD	DI	SF	HU200-150T
2"	50	4.90	3.275	2.825	5.900	4 STD	DI	DI	HU200-200T
2-1/2"	65	10.00	4.250	3.400	7.900	4 STD	DI	SF	HU200-250T
3"	80	13.25	4.660	4.170	8.100	4 STD	DI	SF	HU200-300T
4"	100	18.35	4.910	5.075	9.060	3 MOD	DI	SF	HU200-400T
6"	150	46.00	6.610	7.410	12.800	3 STD	DI	SF	HU200-600T

Standard Service			Pipe Size(in)										End Connection
Fig. No.	CWP	Test	1	1 1/4	1 1/2	2	2 1/2	3	4	6	8		
	SUB	Nut											
200	2,000	3,000	✓	✓	✓	✓	✓	✓	✓	✓			T / BW

### TITLE PIPE COUPLINGS - HAMMER UNION FIGURE 200

#### DISCLAIMER

All drawings and specifications are subject to change without notice. Drawings represent general dimensions of our products. Seal Fast cannot guarantee the dimensions of the part will exactly match those in the drawing. This drawing is the property of Seal Fast Inc. Copying or reproduction of this drawing is expressly prohibited.

#### MATERIAL

DI / SF

**DRAWING NOT TO SCALE**

#### PART #

HU200-xxxT

